



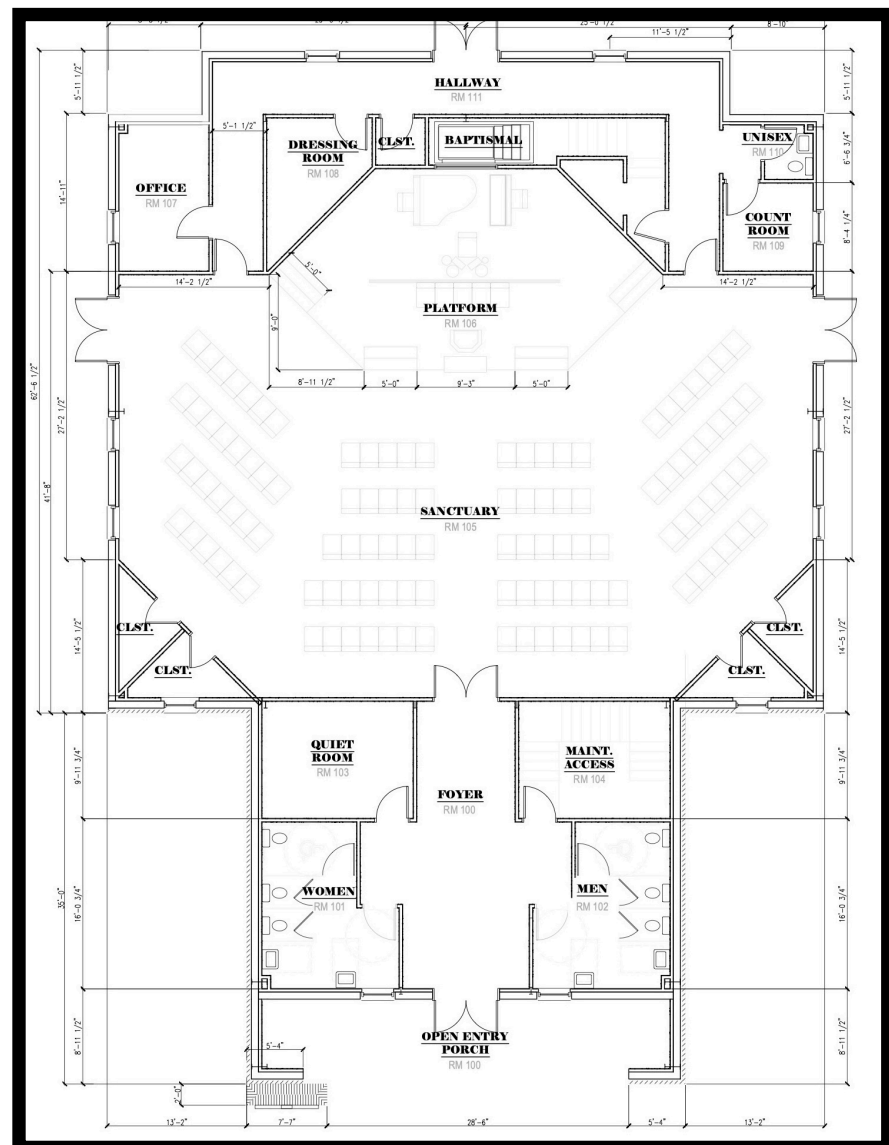
## Where We Have Been ... Where We are Going

Superior Avenue Baptist Church organized on November 14, 1920 with 25 charter members. The church first met for worship at the Superior Avenue School building until 1922 when a place of worship was constructed on the corner of Superior Avenue and Sabine Street. Educational space was added to the church in 1927.

A long range building program was adopted in 1949 that resulted in our current education space completed in 1955 with the Sanctuary completed in time for Christmas Eve in 1960.

In 2020, SABC voted to relocate. Property was purchased in the summer of 2022 on North Columbia Street which will serve as the future home of Superior Avenue Baptist Church. We recently broke ground and started construction on the Sanctuary.

SABC is Building on His Promises trusting that God will continue to guide the church, provide for our needs, give the church a strong future to share the Gospel and minister to the people of Bogalusa, Washington Parish, the State of Louisiana, our nation, and the world.



## The Master's Plan

The following is the Master Site Plan for our new 7 acre location at 1301 North Columbia Street. Due to the financial scope of the project, we are looking at a two phase approach to developing our new location.

Phase I will include a beautiful 5,600 square foot Sanctuary and the shell of a 4400 square foot Multipurpose Building. The Sanctuary building will contain the church foyer, a quiet room for young families with babies and toddlers, handicapped restrooms, and office space. Once complete the Multipurpose Building will include a kitchen, pantry, handicapped restrooms, and a large open space for fellowship meals, exercise, sports, and other church activities. Estimated cost for Phase I is \$1.2 Million.

Phase II will see the completion of the Multipurpose Building, the construction of a 5100 square foot Education Building, and pavement of church drive way and parking lot. The Education Building will house 10 classrooms, a nursery, library, additional office space, and handicapped restrooms. Estimated cost for Phase II is \$1.1 Million.



## HOW YOU CAN BE INVOLVED

We are excited about the future of SABC as we enter into the construction phase of our relocation project. Our Building on His Promises capital campaign will help service our debt and raise money for Phase II of our Master Plan. Throughout the Building on His Promises capital campaign, each of us can continue to do two things to be involved.

**1. Continue to Pray.** Pray for God's guidance and provision. Pray that we will continue to trust and obey God. Pray that God will guide our giving.

**2. Continue to Give.** SABC has already raised nearly \$400,000 toward our Relocation Project. Each of us must continue to give sacrificially toward our building project. Not everyone can make the same size gift; but everyone can make the same size sacrifice. SABC has always been a generous church. May God continue to find us generous in the years ahead.

